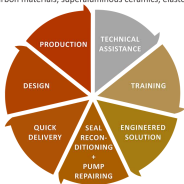




S.C. ROSEAL® S.A.

ROSEAL Co. is a SME specialized in manufacturing sealing systems, aiming permanently to fulfill the market - driven requirements for new and innovative performance products through collaboration with R&D Institutes, universities and academy. The experience in seal manufacturing dates back to 1978. Activities include research, design, production and marketing of mechanical and magnetofluidic seals, manufacturing specific spare parts of carbon materials, superaluminous ceramics, elastomers and PTFE and also training and technical assistance.



INDUSTRIAL SECTORS

- Pump factories
- Chemical plants
- Petrochemical plants
- Pharmaceutical industry
- Textile and paints industry
- Pulp and paper industry
- Food and beverage industry
- Nuclear-electric industry
- Thermal engines
- Water supply and treatment installation
- Internal combustion engines

MAIN PARTNERS



AUTHORIZATIONS (ISO, NUCLEAR, ISCIR):



PRODUCTS: MECHANICAL SEALS

- Component seal
- Cartridge seal



PRODUCTS: SPECIAL MECHANICAL SEALS FOR

- Nuclear Equipment
- Mixer, Agitator, Reactor
- Compressor
- Pump
- Blower
- Vacuum application



PRODUCTS: LEAKAGE-FREE MAGNETIC NANOFUID SEALS FOR

- Vacuum application
- Leakage-free gas sealing application
- Nuclear equipment
- Gas valve
- Tandem mechanical-magnetofluidic seal for liquified gas equipment



SPECIAL SPARE PARTS AND EQUIPMENTS



Ceramic disc faucet



Carbon graphite thrust bearing



Consolidated cores of soft magnetic nanomaterials



Carbide mill



Beam assembling device



Magneto rheological clutch

MANUFACTURING LINES OF MATERIALS:

ELASTOMERS



- S1 – Silicone
- S2 – Nitrile butadiene
- S3 – Fluorocarbon (viton)
- S4 – Ethylene-propylene (EPDM)
- S5 – Elastomer covered by PTFE
- S6 – Spring covered by PTFE
- S7 – Chloroprene
- Sc – Perfluoroethylene

SUPERALUMINOUS CERAMIC



PTFE



- PTFE glassfibre reinforced
- PTFE carbon reinforced
- PTFE with bronze

CARBOGRAPHITIC MATERIALS



- Carbographicitic
- antimony impregnated
- resin impregnated
- Expanded graphite

EXPANDED GRAPHITE



MAGNETORESPONSIVE MATERIALS



NANOTEHNOLOGY AND NANOMATERIALS AT ROSEAL CO.

12 National research project in nanotechnologies



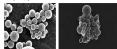
Magnetic nanoparticle



Magnetic nanofluid



Cluster Fe₃O₄ / OA with SLS surfactant layer



Nano-micro structured magnetizable composite fluid





S.C. ROSEAL[®] S.A.

S.C. Roseal S.A.

535600 - Odorheiu Secuiesc

Str.: N. Bălcescu, No.: 5/A, Jud.: Harghita

Tel.: 0040-266-215998; 0040-266-218122;

0040-266-215912

Mob.phone: 0040-747-116610

Fax: 0040-266-215912

E-mail: office@roseal.eu

Web: www.roseal.eu

